

A black and white photograph of a motorcycle engine, showing various mechanical parts like the cylinder head, valves, and timing chain. The image is overlaid with a topographic map pattern of concentric lines, suggesting a technical or engineering theme. The text "EVERYDAY CARRY" is prominently displayed in the center.

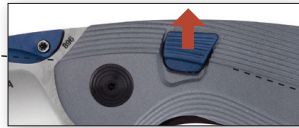
# EVERYDAY CARRY



## 896 RAPIDFIRE



REMOVABLE THUMB SURFACE



LAUNCH BUTTON



<b>BLADE</b>	Drop point, S30V stainless steel
<b>LENGTH</b>	3" (7.62 cm)
<b>THICKNESS</b>	0.100"
<b>CLOSED</b>	4 1/4" (10.8 g)
<b>WEIGHT</b>	3.7 oz (104.9 g)
<b>HANDLE</b>	Anodized aluminum
<b>CLIP</b>	Titanium clip, removable

**BOX:** MODEL # 0896PLS-B, CATALOG # 11184

The sale of automatic knives is federally regulated. See page 75 for details.



THE RAPIDFIRE features a dual action opening system for automatic or non-automatic deployment. The knife can be opened manually like a standard liner lock using the thumb surface. The blade locks open in this position and closes as you would a standard liner lock. The thumb surface on the blade can also be removed to show a thumb hole for easy, non-auto deployment. For automatic opening use your thumb to move the launch button upward toward the spine of the knife. The launch button activates the release mechanism that rapidly opens the blade to the locked open position.

## 898 IMPACT



ENGAGES WITH THE **PUSH OF A BUTTON**  
Includes safety slide



<b>BLADE</b>	Drop point, satin finish S30V stainless steel
<b>LENGTH</b>	3 1/8" (7.9 cm)
<b>THICKNESS</b>	0.120"
<b>CLOSED</b>	4 5/8" (11.7)
<b>WEIGHT</b>	4.1 oz (116.2 g)
<b>HANDLE</b>	Safety Orange Cerakote® coated 6061 T6 aluminum
<b>CLIP</b>	Removable, stainless steel, discreet, deep pocket carry

**BOX:** MODEL # 0898ORS-B, CATALOG # 11191

Patent Pending

The sale of automatic knives is federally regulated. See page 75 for details.

## 710 VOLT



<b>BLADE</b>	Upswept skinner, Black Oxide coated, 420HC steel
<b>LENGTH</b>	3 1/4" (8.25 cm)
<b>THICKNESS</b>	0.110"
<b>CLOSED</b>	4 1/2" (11.4 cm)
<b>WEIGHT</b>	2.8 oz (79.7 g)
<b>HANDLE</b>	Anodized aluminum with grip texture
<b>CLIP</b>	Removable, Black Oxide coated stainless steel

**BOX:** MODEL # 0710RDS-B, CATALOG # 11126

**CLAM:** MODEL # 0710RDS-C, CATALOG # 11127

## 289 FLUID



<b>BLADE</b>	Spear point, 420HC steel
<b>LENGTH</b>	3" (7.6 cm)
<b>THICKNESS</b>	0.095"
<b>CLOSED</b>	4" (10.1 cm)
<b>WEIGHT</b>	2.2 oz (62.3 g)
<b>HANDLE</b>	Glass reinforced nylon
<b>CLIP</b>	Removable, stainless steel

**BOX:** MODEL # 0289BKS-B, CATALOG # 10703

**CLAM:** MODEL # 0289BKS-C, CATALOG # 10646

## 294 MOMENTUM



ASSISTED **OPENING!**\*



**BLADE** Drop point, satin finish, S30V steel  
**LENGTH** 3 1/8" (7.9 cm)  
**THICKNESS** 0.120"  
**CLOSED** 4 1/2" (11.4 cm)  
**WEIGHT** 4.3 oz (121.9 g)  
**HANDLE** Anodized 6061-T6 aluminum with grip texture  
**CLIP** Stainless steel, removable, discreet deep pocket carry

**BOX:** MODEL # 0294BKS-B, CATALOG # 10176

Patent Pending

## 293 INERTIA



ASSISTED **OPENING!**\*



**BLADE** Drop point, 420HC steel  
**LENGTH** 3 1/8" (7.9 cm)  
**THICKNESS** 0.120"  
**CLOSED** 4 1/2" (11.4 cm)  
**WEIGHT** 3.8 oz (107.7 g)  
**HANDLE** Nylon  
**CLIP** Stainless steel, removable, discreet deep pocket carry

**BOX:** MODEL # 0293BKS2-B, CATALOG # 11579

**BOX:** MODEL # 0293BKS2-C, CATALOG # 11580

## 288 QUICKFIRE®



ASSISTED **OPENING!**\*



**BLADE** Drop point, 420HC steel  
**LENGTH** 2 3/4" (7.0 cm)  
**THICKNESS** 0.120"  
**CLOSED** 4 1/4" (10.8 cm)  
**WEIGHT** 3.6 oz (102.1 g)  
**HANDLE** Glass reinforced nylon  
**CLIP** Deep pocket carry

**BOX:** MODEL # 0288BKS-B, CATALOG # 5982

**CLAM:** MODEL # 0288BKS-C, CATALOG # 5983

## 290 RUSH®



ASSISTED **OPENING!**\*



**BLADE** Drop point, 420HC steel  
**LENGTH** 2 1/2" (6.4 cm)  
**THICKNESS** 0.090"  
**CLOSED** 3 3/4" (9.5 cm)  
**WEIGHT** 2.4 oz (68.3 g)  
**HANDLE** Bead blasted color anodized 6061-T6 aluminum  
**CLIP** Stainless steel, removable

**BOX:** MODEL # 0290BLS1-B, CATALOG # 7816

**CLAM:** MODEL # 0290BLS1-C, CATALOG # 7817

\*All Buck assisted opening knives are under: US 7,107,686; 7,313,866 and patent pending. Licensed under one or more of the following patents: 5,802,722; 6,145,202; 6,338,431; 6,397,476

Buck's ASAP assisted opening knives are functionally different than automatic/switchblade knives. Switchblade knives use a button/lever in the handle to release the blade and the blade cannot be moved at all without entirely opening the knife. As with many things, knife laws change and vary from location to location. It is the user's responsibility to comply with all regulations. For more information and general definitions please visit [www.ATKI.org](http://www.ATKI.org)



## 342 & 347 VANTAGE® - PRO



**BLADE** Drop point, S30V steel  
**LENGTH** 342: 2 5/8" (6.7 cm)  
 347: 3 1/4" (8.3 cm)  
**THICKNESS** 0.120"  
**CLOSED** 342: 3 3/4" (9.5 cm)  
 347: 4 3/8" (11.1 cm)  
**WEIGHT** 342: 2.3 oz (65.2 g)  
 347: 4.0 oz (113.4 g)  
**HANDLE** Injection molded nylon with CNC contoured black G10  
**CLIP** Removable, reversible, deep pocket, tip-up carry

**342**  
**BOX: MODEL # 0342BKS1-B, CATALOG # 7836**  
**347**  
**BOX: MODEL # 0347BKS1-B, CATALOG # 7839**  
*Patent Pending*

## 341 & 346 VANTAGE® - AVID



**BLADE** Drop point, 420HC steel  
**LENGTH** 341: 2 5/8" (6.7 cm)  
 346: 3 1/4" (8.3 cm)  
**THICKNESS** 0.120"  
**CLOSED** 341: 3 3/4" (9.5 cm)  
 346: 4 3/8" (11.1 cm)  
**WEIGHT** 341: 2.3 oz (65.2 g)  
 346: 4.0 oz (113.4 g)  
**HANDLE** Injection molded nylon with CNC contoured Rosewood inlay  
**CLIP** Removable, reversible, deep pocket, tip-up carry

**341**  
**BOX: MODEL # 0341RWS-B, CATALOG # 7834**  
**CLAM: MODEL # 0341RWS-C, CATALOG # 7835**  
**346**  
**BOX: MODEL # 0346RWS-B, CATALOG # 7837**  
**CLAM: MODEL # 0346RWS-C, CATALOG # 7838**  
*Patent Pending*

## 340 & 345 VANTAGE® - SELECT



**BLADE** Drop point, 420HC steel  
**LENGTH** 340: 2 5/8" (6.7 cm)  
 345: 3 1/4" (8.3 cm)  
**THICKNESS** 0.120"  
**CLOSED** 340: 3 3/4" (9.5 cm)  
 345: 4 3/8" (11.1 cm)  
**WEIGHT** 340: 2.3 oz (65.2 g)  
 345: 3.7 oz (104.9 g)  
**HANDLE** Black glass reinforced nylon  
**CLIP** Removable, reversible, deep pocket, tip-up carry

**340**  
**BOX: MODEL # 0340BKS-B, CATALOG # 3212**  
**CLAM: MODEL # 0340BKS-C, CATALOG # 3213**  
**345**  
**BOX: MODEL # 0345BKS-B, CATALOG # 3214**  
**CLAM: MODEL # 0345BKS-C, CATALOG # 3215**  
*Patent Pending*

# RIVAL

This sleek series of lightweight and extremely durable knives were designed to meet the ever expanding everyday needs while priced to meet every wallet size. Offered in four different sizes, each knife features a 420HC steel drop point blade, a lockback mechanism and durable handle constructed of injection molded nylon for enhanced strength.

## 363 RIVAL SS



<b>BLADE</b>	Drop point, 420HC steel
<b>LENGTH</b>	1 7/8" (4.8 cm)
<b>THICKNESS</b>	0.080"
<b>CLOSED</b>	2 7/8" (7.3 cm)
<b>WEIGHT</b>	0.8 oz (22.7 g)
<b>HANDLE</b>	Injection molded nylon

**BOX:** MODEL # 0363BKS-B, CATALOG # 11408  
**CLAM:** MODEL # 0363BKS-C, CATALOG # 11409

## 364 RIVAL I



<b>BLADE</b>	Drop point, 420HC steel
<b>LENGTH</b>	2 3/4" (6.99 cm)
<b>THICKNESS</b>	0.120"
<b>CLOSED</b>	3 1/2" (8.89 cm)
<b>WEIGHT</b>	1.4 oz (39.69 g)
<b>HANDLE</b>	Injection molded nylon
<b>CLIP</b>	Stainless steel, removable

**BOX:** MODEL # 0364BKS-B, CATALOG # 11129  
**CLAM:** MODEL # 0364BKS-C, CATALOG # 11130

## 365 RIVAL II



<b>BLADE</b>	Drop point, 420HC steel
<b>LENGTH</b>	3 1/8" (7.94 cm)
<b>THICKNESS</b>	0.120"
<b>CLOSED</b>	4 1/4" (10.8 cm)
<b>WEIGHT</b>	2.1 oz (59.53 g)
<b>HANDLE</b>	Injection molded nylon
<b>CLIP</b>	Stainless steel, removable

**BOX:** MODEL # 0365BKS-B, CATALOG # 11131  
**CLAM:** MODEL # 0365BKS-C, CATALOG # 11132

## 366 RIVAL III



<b>BLADE</b>	Drop point, 420HC steel
<b>LENGTH</b>	3 5/8" (9.2 cm)
<b>THICKNESS</b>	0.120"
<b>CLOSED</b>	4 3/4" (12.1 cm)
<b>WEIGHT</b>	3.0 oz (85.0 g)
<b>HANDLE</b>	Injection molded nylon
<b>CLIP</b>	Stainless steel, removable

**BOX:** MODEL # 0366BKS-B, CATALOG # 11410  
**CLAM:** MODEL # 0366BKS-C, CATALOG # 11411



## 524 ALUMNI



<b>BLADE</b>	Drop point, 420HC steel
<b>LENGTH</b>	1 7/8" (4.8 cm)
<b>THICKNESS</b>	0.080"
<b>CLOSED</b>	2 4/5" (7.3 cm)
<b>WEIGHT</b>	0.75 oz (21.0 g)
<b>HANDLE</b>	Anodized aluminum

### BLACK

**BOX:** MODEL # 0524BKS-B, CATALOG # 11770  
**CLAM:** MODEL # 0524BKS-C, CATALOG # 11771

### BLUE

**BOX:** MODEL # 0524BLS-B, CATALOG # 11772  
**CLAM:** MODEL # 0524BLS-C, CATALOG # 11773

### GRAY

**BOX:** MODEL # 0524GYS-B, CATALOG # 11776  
**CLAM:** MODEL # 0524GYS-C, CATALOG # 11777

### GOLD

**BOX:** MODEL # 0524GDS-B, CATALOG # 11774  
**CLAM:** MODEL # 0524GDS-C, CATALOG # 11775

## 055 THE 55®



<b>BLADE</b>	Clip, 420HC steel
<b>LENGTH</b>	2 3/8" (6 cm)
<b>THICKNESS</b>	0.084"
<b>CLOSED</b>	3 3/8" (8.6 cm)
<b>WEIGHT</b>	1.9 oz (54.1 g)
<b>HANDLE</b>	American Walnut with brass bolsters

**BOX:** MODEL # 0055BRS-B, CATALOG # 5684  
**CLAM:** MODEL # 0055BRS-C, CATALOG # 5685

## 425 MINIBUCK™



<b>BLADE</b>	Drop point, 420HC steel
<b>LENGTH</b>	1 7/8" (4.8 cm)
<b>THICKNESS</b>	0.082"
<b>CLOSED</b>	2 7/8" (7.3 cm)
<b>WEIGHT</b>	1.0 oz (28.3 g)
<b>HANDLE</b>	Valox™

**BOX:** MODEL # 0425BKS-B, CATALOG # 9200  
**CLAM:** MODEL # 0425BKS-C, CATALOG # 1474

## 500 DUKE



<b>BLADE</b>	Drop point, 420HC steel
<b>LENGTH</b>	3" (7.6 cm)
<b>THICKNESS</b>	0.110"
<b>CLOSED</b>	4 1/4" (10.8 cm)
<b>WEIGHT</b>	4.6 oz (130.4 g)
<b>HANDLE</b>	Rosewood with stainless steel bolsters
<b>SHEATH</b>	Genuine leather, black

**BOX: MODEL # 0500RWS-B, CATALOG # 2597**

## 501 SQUIRE™



<b>BLADE</b>	Drop point, 420HC steel
<b>LENGTH</b>	2 3/4" (7.0 cm)
<b>THICKNESS</b>	0.096"
<b>CLOSED</b>	3 3/4" (9.5 cm)
<b>WEIGHT</b>	3 oz (85.4 g)
<b>HANDLE</b>	Rosewood with nickel silver bolsters
<b>SHEATH</b>	Genuine leather, black

**BOX: MODEL # 0501RWS-B, CATALOG # 2598**  
**CLAM: MODEL # 0501RWS-C, CATALOG # 1270**

## 503 PRINCE®



<b>BLADE</b>	Drop point, 420HC steel
<b>LENGTH</b>	2 1/2" (6.4 cm)
<b>THICKNESS</b>	0.084"
<b>CLOSED</b>	3 3/8" (8.6 cm)
<b>WEIGHT</b>	2 oz (57 g)
<b>HANDLE</b>	Rosewood with nickel silver bolsters

**BOX: MODEL # 0503RWS-B, CATALOG # 9201**  
**CLAM: MODEL # 0503RWS-C, CATALOG # 1274**

## 505 KNIGHT™



<b>BLADE</b>	Drop point, 420HC steel
<b>LENGTH</b>	1 7/8" (4.8 cm)
<b>THICKNESS</b>	0.082"
<b>CLOSED</b>	2 3/4" (7.0 cm)
<b>WEIGHT</b>	1.5 oz (42.7 g)
<b>HANDLE</b>	Rosewood with nickel silver bolsters

**BOX: MODEL # 0505RWS-B, CATALOG # 2599**





## 300 GLACIER



<b>BLADE</b>	Drop point, 420HC steel
<b>LENGTH</b>	3 1/8" (7.8 cm)
<b>THICKNESS</b>	0.100"
<b>CLOSED</b>	4" (10.2 cm)
<b>WEIGHT</b>	3.1 oz (89.0 g)
<b>HANDLE</b>	G10 black
<b>CLIP</b>	Stainless steel, deep pocket carry

**BOX: MODEL # 0300BKS-B, CATALOG # 11193**  
**CLAM: MODEL # 0300BKS-C, CATALOG # 11194**

## 325 COLLEAGUE™



<b>BLADE</b>	Drop point, 420HC steel
<b>LENGTH</b>	1 7/8" (4.8 cm)
<b>THICKNESS</b>	0.082"
<b>CLOSED</b>	2 3/4" (7.0 cm)
<b>WEIGHT</b>	1.3 oz (37.0 g)
<b>HANDLE</b>	Brushed stainless steel

**BOX: MODEL # 0325SSS-B, CATALOG # 5830**  
**CLAM: MODEL # 0325SSS-C, CATALOG # 5831**

## 327 NOBLEMAN



327TT



327SS



327CF



<b>BLADE</b>	327SS: Drop point, 420HC steel 327TT & 327CF: Titanium coated
<b>LENGTH</b>	2 5/8" (6.7 cm)
<b>THICKNESS</b>	0.095"
<b>CLOSED</b>	3 3/4" (9.5 cm)
<b>WEIGHT</b>	2.6 oz (74.0 g)
<b>HANDLE</b>	327SS: Brushed stainless steel with EDM texture 327TT: Titanium coated stainless steel with EDM texture 327CF: Carbon fiber graphic, rubberized on left side
<b>CLIP</b>	Removable stainless steel, deep pocket carry

### TT-TITANIUM COATED

**BOX: MODEL # 0327TTS-B, CATALOG # 5860**  
**CLAM: MODEL # 0327TTS-C, CATALOG # 5861**

### SS-STAINLESS STEEL

**BOX: MODEL # 0327SSS-B, CATALOG # 5834**  
**CLAM: MODEL # 0327SSS-C, CATALOG # 5835**

### CF-CARBON FIBER

**BOX: MODEL # 0327CFS-B, CATALOG # 3086**  
**CLAM: MODEL # 0327CFS-C, CATALOG # 3087**

## 328 GRADUATE™



<b>BLADE</b>	Drop point, 420HC steel
<b>LENGTH</b>	2 3/8" (6.0 cm)
<b>THICKNESS</b>	0.100"
<b>CLOSED</b>	3 1/4" (8.26 cm)
<b>WEIGHT</b>	1.85 oz (52.44 g)
<b>HANDLE</b>	Burlwood

**BOX: MODEL # 0328BWS-B, CATALOG # 11185**  
**CLAM: MODEL # 0328BWS-C, CATALOG # 11186**

# POCKET KNIVES

An American favorite, Buck's pocket knives are classic, convenient and multi-purpose. Available in different sizes and materials, ours are manufactured with every detail in mind, from smooth rounded bolsters to 420HC steel blades designed for various purposes.

## 301 STOCKMAN®



**BLADES** Clip, spey, and sheepfoot, 420HC steel  
**CLOSED** 3 7/8" (9.8 cm)  
**WEIGHT** 2.9 oz (82.6 g)  
**HANDLE** Black Valox® with nickel silver bolsters or Rosewood with brass bolsters

### BLACK

**BOX:** MODEL # 0301BKS-B, CATALOG # 2587

**CLAM:** MODEL # 0301BKS-C, CATALOG # 3271

### ROSEWOOD

**BOX:** MODEL # 0301RWS-B, CATALOG # 7457

**CLAM:** MODEL # 0301RWS-C, CATALOG # 7458

## 303 BUCK CADET®



**BLADES** Clip, spey, and sheepfoot, 420HC steel  
**CLOSED** 3 1/4" (8.3 cm)  
**WEIGHT** 1.9 oz (54.1 g)  
**HANDLE** Black Valox® with nickel silver bolsters or Rosewood with brass bolsters

### BLACK

**BOX:** MODEL # 0303BKS-B, CATALOG # 9203

**CLAM:** MODEL # 0303BKS-C, CATALOG # 1279

### ROSEWOOD

**BOX:** MODEL # 0303RWS-B, CATALOG # 7461

**CLAM:** MODEL # 0303RWS-C, CATALOG # 7462



## 371 STOCKMAN®



**BLADES** Clip, spey, and sheep's foot 420J2 steel  
**CLOSED** 3 7/8" (9.8 cm)  
**WEIGHT** 3.1 oz (88.3 g)  
**HANDLE** Woodgrain with nickel silver bolsters

**BOX:** MODEL # 0371BRS-B, CATALOG # 5718  
**CLAM:** MODEL # 0371BRS-C, CATALOG # 5719

## 373 TRIO



**BLADES** Clip, spey, and sheep's foot, 420J2 steel  
**CLOSED** 3 1/4" (8.3 cm)  
**WEIGHT** 1.9 oz (54.1 g)  
**HANDLE** Woodgrain with nickel silver bolsters

**BOX:** MODEL # 0373BRS-B, CATALOG # 5720  
**CLAM:** MODEL # 0373BRS-C, CATALOG # 5721

## 375 DEUCE



**BLADES** Clip and coping, 420J2 steel  
**CLOSED** 2 5/8" (6.7 cm)  
**WEIGHT** 0.7 oz (19.9 g)  
**HANDLE** Woodgrain with nickel silver bolsters

**BOX:** MODEL # 0375BRS-B, CATALOG # 5722  
**CLAM:** MODEL # 0375BRS-C, CATALOG # 5723

## 379 SOLO



**BLADE** Clip, 420J2 steel  
**CLOSED** 3" (7.6 cm)  
**WEIGHT** 0.9 oz (25.6 g)  
**HANDLE** Woodgrain with nickel silver bolsters

**BOX:** MODEL # 0379BRS-B, CATALOG # 5717  
**CLAM:** MODEL # 0379BRS-C, CATALOG # 5716

## 382 TRAPPER



**BLADES** Clip and spey, 420J2 steel  
**CLOSED** 3 1/2" (8.9 cm)  
**WEIGHT** 2.6 oz (74 g)  
**HANDLE** Woodgrain with nickel silver bolsters

**BOX:** MODEL # 0382BRS-B, CATALOG # 5840  
**CLAM:** MODEL # 0382BRS-C, CATALOG # 5841

## 385 TOOTHPICK



**BLADE** Modified clip, 420J2 steel  
**CLOSED** 3" (7.6 cm)  
**WEIGHT** 0.8 oz (22.7 g)  
**HANDLE** Woodgrain with nickel silver bolsters

**BOX:** MODEL # 0385BRS-B, CATALOG # 3137  
**CLAM:** MODEL # 0385BRS-C, CATALOG # 3138

## 389 CANOE



**BLADES** Spear and pen, 420J2 steel  
**CLOSED** 3 5/8" (9.2 cm)  
**WEIGHT** 2.7 oz (76.5 g)  
**HANDLE** Woodgrain with nickel silver bolsters

**BOX:** MODEL # 0389BRS-B, CATALOG # 3139  
**CLAM:** MODEL # 0389BRS-C, CATALOG # 3140

# LEGACY





# LEGACY COLLECTION

Buck's Legacy Collection offers exceptional beauty and dramatic designs. Hours of hand craftsmanship go into each Legacy Collection knife. Many pieces, designed by Buck's employees, are handcrafted in the USA with unique materials and defined as cherished family heirlooms. Also featuring designs from long time legacy artists David Yellowhorse and Michael Prater, the 2018 collection brings a mix of rare and modern materials and a glimpse into the history of Buck Knives.

## 907 EXPERT HUNTER



**DAMASTEEL®**

**BLADE** Upswept skinner, Damasteel DS93X  
**LENGTH** 5 1/8" (13.0 cm)  
**THICKNESS** 0.175"  
**OVERALL** 9 1/4" (23.5 cm)  
**WEIGHT** 8.3 oz (235.3 g)  
**HANDLE** Stacked Ivory Micarta® and nickel silver  
**FEATURES** Walnut glass top display box.  
Certificate of Authenticity, serialized with a total quantity of 100

**BOX:** MODEL # 0907IVSLE-B, CATALOG # 11660



**BILLY BATES**/FOUNDATIONAL/SPECIAL ACCOUNTS SALES MANAGER  
*Billy has been working for Buck Knives for over 40 years*

## 346 IVORY VANTAGE



**DAMASTEEL®**

**BLADE** Drop point, Damasteel DS93X  
**LENGTH** 3 1/4" (9.3 cm)  
**THICKNESS** 0.120"  
**CLOSED** 4 3/8" (11.1 cm)  
**WEIGHT** 4.2 oz (119.1 g)  
**HANDLE** Ivory Micarta®  
**FEATURES** Pine box. Certificate of Authenticity, serialized with a total quantity of 250

**BOX:** MODEL # 0346IVSLE-B, CATALOG # 11659

## 408 WHITE BUFFALO KALINGA



**BLADE** Upswept skinner, S35VN steel  
**LENGTH** 4 7/8" (12.4 cm)  
**THICKNESS** 0.160"  
**OVERALL** 10 1/4" (26.0 cm)  
**WEIGHT** 10.5 oz (297.7 g)  
**HANDLE** White turquoise, buffalo with brass guard  
**FEATURES** Walnut glass top display box.  
Certificate of Authenticity, serialized with a total quantity of 100

**BOX:** MODEL # 0408BFSLE-B, CATALOG # 11662

*J. Legerton*

**JEFF LEGERTON**/SPECIALS  
*Jeff has been working for Buck Knives for over 30 years*

## 901 SCARLET SCIMITAR



<b>BLADE</b>	Scimitar, 420HC steel
<b>LENGTH</b>	7 3/4" (19.7 cm)
<b>THICKNESS</b>	0.160"
<b>OVERALL</b>	12 1/8" (30.8 cm)
<b>WEIGHT</b>	10.5 oz (297.7 g)
<b>HANDLE</b>	Micarta®, aluminum with white and red lucite
<b>FEATURES</b>	Walnut glass top display box. Certificate of Authenticity, serialized with a total quantity of 200

**BOX: MODEL # 0901BKSLE-B, CATALOG # 11663**



**JOE HOUSER**/BUCK HISTORIAN AND  
CUSTOM KNIFE ARTISAN

*Joe has been working for Buck Knives for over 30 years*

## 898 IMPACT CF



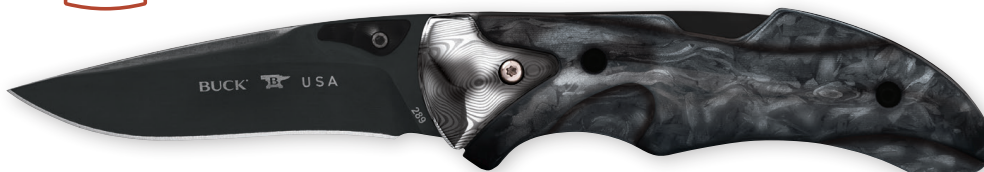
<b>BLADE</b>	Drop point, DLC coated S35VN steel
<b>LENGTH</b>	3 1/8" (7.9 cm)
<b>THICKNESS</b>	0.120"
<b>CLOSED</b>	4 5/8" (11.7 cm)
<b>WEIGHT</b>	4.75 oz (134.7 g)
<b>HANDLE</b>	Tan Cerakote® with carbon fiber inlay
<b>FEATURES</b>	Pine box. Certificate of Authenticity, serialized with a total quantity of 250

**BOX: MODEL # 0898TNSLE-B, CATALOG # 11666**

*The sale of automatic knives is federally regulated. See page 75 for details.*

**AUTOMATIC**

## 289 FLUID X1



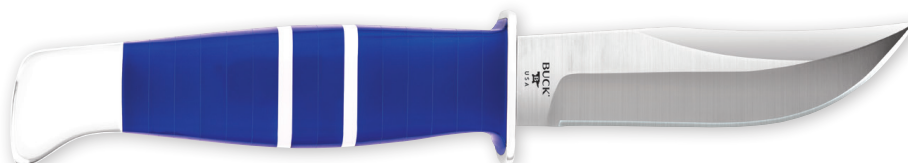
<b>BLADE</b>	Drop point, DLC coated, S35VN steel
<b>LENGTH</b>	3 1/8" (7.9 cm)
<b>THICKNESS</b>	0.90"
<b>CLOSED</b>	4" (10.2 cm)
<b>WEIGHT</b>	3.15 oz (89.3 g)
<b>HANDLE</b>	Damasteel DS93X bolster, marbled carbon fiber
<b>FEATURES</b>	Black Paperstone® display box. Certificate of Authenticity, serialized with a total quantity of 150

**BOX: MODEL # 0289CFSLE-B, CATALOG # 11655**



**MARK MCLEAN**/DESIGN SUPERVISOR  
*Mark has been working for Buck Knives for over 10 years*

## 212 FIXED RANGER



<b>BLADE</b>	Clip point, W2 steel
<b>LENGTH</b>	3 5/8" (9.2 cm)
<b>THICKNESS</b>	0.155"
<b>OVERALL</b>	7 7/8" (20.0 cm)
<b>WEIGHT</b>	4.15 oz (117.7 g)
<b>HANDLE</b>	Blue and white lucite with aluminum guard/pommel
<b>SHEATH</b>	Genuine leather, black
<b>FEATURES</b>	Pine box. Certificate of Authenticity, serialized with a total quantity of 250

**BOX: MODEL # 0212BLSLE-B, CATALOG # 11658**





## 110 RUNNING FREE



**DAVID YELLOWHORSE**/CUSTOM KNIFE ARTIST  
David Yellowhorse has been designing for Buck Knives for over 30 years



<b>BLADE</b>	Clip point, 420HC steel
<b>LENGTH</b>	3 3/4" (9.5 cm)
<b>THICKNESS</b>	0.120"
<b>CLOSED</b>	4 7/8" (12.4 cm)
<b>WEIGHT</b>	7.75 oz (219.7 g)
<b>HANDLE</b>	Black jet and bloody jasper with nickel silver bolsters
<b>FEATURES</b>	Walnut glass top display box. Certificate of Authenticity, serialized with a total quantity of 100

**BOX: MODEL # 0110VISLE1-B, CATALOG # 11656**

## 536 PAINTED PONY BLACKSMITH



PAINTED PONY  
By: Michael J. Prater

**MICHAEL PRATER**/CUSTOM LEGACY ARTIST  
Michael Prater has been designing for Buck Knives for over 5 years



<b>BLADE</b>	Drop point, 420HC steel
<b>LENGTH</b>	4 1/2" (11.4 cm)
<b>THICKNESS</b>	0.150"
<b>OVERALL</b>	8 1/8" (20.9 cm)
<b>WEIGHT</b>	6.0 oz (170.1 g)
<b>HANDLE</b>	Pearl, aluminum, white/black recon stone
<b>FEATURES</b>	Alder wood glass top display box. Certificate of Authenticity, serialized with a total quantity of 100

**BOX: MODEL # 0536PESLE-B, CATALOG #11657**

## 640 XL



<b>BLADE</b>	Clip point, 440C steel with custom filework
<b>LENGTH</b>	6 5/8" (16.8 cm)
<b>THICKNESS</b>	0.120"
<b>OVERALL</b>	11 3/4" (29.8 cm)
<b>WEIGHT</b>	18.3 oz (518.8 g)
<b>HANDLE</b>	Elk with buffalo spacers with nickel silver pommel/guard
<b>SHEATH</b>	Distressed leather, brown
<b>FEATURES</b>	Pine box. Certificate of Authenticity, serialized with a total quantity of 259

**BOX: MODEL # 0640EKSLE-B, CATALOG # 11661**

# THE 640 XL

The 640 XL is a tribute to six employees who have devoted 40 or more years of service to Buck Knives. In the 1970's, these young men were developing product for Buck Knives and were an integral part in the move from California to Idaho to set up the new factory some 30 years later. Development of this unique, legacy knife was not rushed and was based off of the 124 Frontiersman, a knife they all owned and worked on 40 years ago. Consensus among the six men needed to be met at every detail and aspect. It is created with one of the first steels ever used by Buck Knives, 440C, and custom filework was added to the spine. The handcrafted Elk handle was chosen as a timeless material and accentuated with nickel silver and buffalo spacers. Representing the total number of years with the company these six men hold collectively, the XL is serialized with a total quantity of 259.



Buck Knives is pleased to honor the following six employees for their years of service and the advancements they have brought to this organization:



**RON DUPREE**  
SR. DOUBLE DISC  
OPERATOR



**RICK REHBERGER**  
SR. HOLLOW GRIND  
OPERATOR



**JOHN RENZI**  
DIRECTOR OF IMPORT  
DEVELOPMENT



**BILLY BATES**  
FOUNDATIONAL/SPECIAL  
ACCOUNTS SALES MANAGER



**DAN PERETTI**  
WARRANTY REPAIR  
TECHNICIAN



**STEVE RALEY**  
SR. MANUFACTURING  
ENGINEER

# DISPLAYS

Our displays are the perfect way to showcase Buck knives. For display program information, please contact us at 800-735-2825.



## 5-KNIFE STAND

Clear acrylic with black Buck logo

**WIDTH** 4 1/8" (11.8 cm)

**DEPTH** 5 1/2" (14.0 cm)

**HEIGHT** 3 3/4" (9.5 cm)

**MODEL # 21005, CATALOG # 5519**

*Knives not included*



## 3-KNIFE STAND

Clear acrylic with black Buck logo

**WIDTH** 4 1/8" (11.8 cm)

**DEPTH** 5 1/2" (14 cm)

**HEIGHT** 3 3/4" (9.5 cm)

**MODEL # 21004, CATALOG # 2188**

*Knives not included*



## 1-KNIFE STAND

Clear acrylic with black Buck logo

**WIDTH** 1 1/2" (3.8 cm)

**DEPTH** 2" (5.1 cm)

**HEIGHT** 2" (5.1 cm)

**MODEL # 21008, CATALOG # 2192**

*Knives not included*



## SINGLE SLOT 1-KNIFE STAND

Clear acrylic with black Buck logo

**WIDTH** 1 1/2" (3.8 cm)

**DEPTH** 1 1/4" (4.4 cm)

**HEIGHT** 1 1/4" (4.4 cm)

**MODEL # 21006, CATALOG # 2190**

*Knives not included*

## PROGRAMS

CONTACT **YOUR SALES REP**  
*for programs!*



## STATIONARY COUNTERTOP DISPLAY

Mahogany stained solid wood. Acrylic doors, windows, and shelving. Plastic knife stands included. Display holds 20-25 knives. Display has a storage compartment.

**WIDTH** 1.5' (45.7 cm)

**DEPTH** 1.3' (39.6 cm)

**HEIGHT** 2.6' (79.2 cm)

**MODEL # 21041, CATALOG # 3689**

*Knives not included*

## ROTATING COUNTERTOP DISPLAY

Mahogany stained solid wood. Acrylic doors, windows, and shelving. Plastic knife stands included. Top portion rotates. Display holds 20-25 knives. Display has a storage compartment.

**WIDTH** 1.5' (45.7 cm)

**DEPTH** 1.7' (51.8 cm)

**HEIGHT** 3.3' (100.6 cm)

**MODEL # 21042, CATALOG # 3690**

*Knives not included*



## ROTATING FLOOR DISPLAY

Mahogany stained solid wood. Acrylic doors, windows, and shelving. Plastic knife stands included. Top portion rotates. Display holds 20-25 knives. Display has a storage compartment.

**WIDTH** 1.6' (48.8 cm)

**DEPTH** 1.8' (54.9 cm)

**HEIGHT** 5.3' (161.5 cm)

**MODEL # 21040, CATALOG # 3688**

*Knives not included*



## GRID CLAM PACKAGE

Powder coated stainless steel frame. Includes 36 hooks, 6" each. Display holds 15-20 SKUs. Interchangeable graphics included. Casters for easy mobility.

**WIDTH** 1.875' (57.2 cm)

**DEPTH** 1.5' (45.7 cm)

**HEIGHT** 5.5' (170.2 cm)

**MODEL # 21051, CATALOG # 7672**

*Knives not included*

# SPECIAL MARKETS



ENGRAVING



CHECKERING



HANDLE OPTIONS



LASER & WHITE FILL



LASERMARK ON MIRROR POLISH



GOLD ACID ETCH



CUTOUT WITH PAD PRINT



WEDDING KNIFE  
(INCLUDES GLASS TOP WOODEN DISPLAY BOX)

We know how important unforgettable events are to you and those you care about, that's why Buck Knives can help create endless memories with our specialty gifts. Our artisans are skilled in blade cutouts, pad printing, laser marking, various handle personalization, and more to help commemorate your special occasion. Minimum quantities apply.

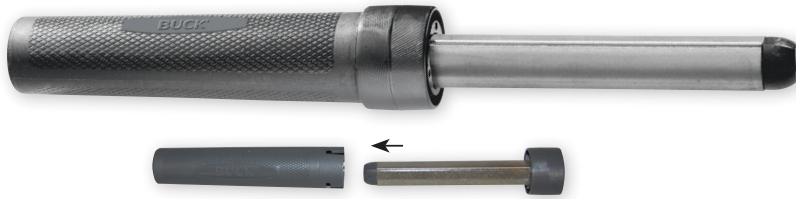


**FOR ORDERS, PLEASE CONTACT SPECIAL PROJECTS 208.262.0500 x235**

LASER AND ENGRAVING ONLY PROJECTS, PLEASE CONTACT INSIDE SALES TEAM 800.735.2825 OPTION 4.

# SHARPENERS

## EDGE TEK® ULTRA FLIPSTIK®



FLIPSTIK® HANDLE **DOUBLES AS A CASE!**  
*Twist to lock or unlock!*



**MATERIAL** 100% Diamond coated oval surfaces  
**SIZE** 4" x 1/2" (10.2 cm x 1.3 cm)  
**OVERALL** 9" (22.9 cm)  
**CLOSED** 5" (12.7 cm)  
**WEIGHT** 3 oz (85.0 g)  
**GRIT** 325 (Coarse)  
 750 (Medium)  
 1200 (Fine)

**BOX:** MODEL # 97044-B, CATALOG # 4976  
**CLAM:** MODEL # 97044-C, CATALOG # 4977

## EDGE TEK® FIELD FLIPSTIK®



**MATERIAL** 100% Diamond coated oval surfaces  
**SIZE** 4" x 3/4" (10.2 cm x 1.9 cm)  
**OVERALL** 9" (22.9 cm)  
**CLOSED** 5" (12.7 cm)  
**WEIGHT** 1.9 oz (53.9 g)  
**GRIT** 750 (Medium), both sides

**BOX:** MODEL # 97043-B, CATALOG # 4974  
**CLAM:** MODEL # 97043-C, CATALOG # 4975

## EDGE TEK® FISHING FLIPSTIK®



**MATERIAL** 100% Diamond coated surfaces  
**SIZE** 4" x 1/2" (10.2 cm x 1.3 cm)  
**OVERALL** 9" (22.9 cm)  
**CLOSED** 5" (12.7 cm)  
**WEIGHT** 1.6 oz (45.4 g)  
**GRIT** 325 (Coarse hook grooves)  
 750 (Medium, flat)

**BOX:** MODEL # 97032-B, CATALOG # 7590  
**CLAM:** MODEL # 97032-C, CATALOG # 7591

## EDGE TEK® ULTRA STEEL 10"



**MATERIAL** 100% Diamond coated oval surfaces  
**SIZE** 10" x 1/2" (25.4 cm x 1.3 cm)  
**OVERALL** 15 3/4" (40 cm)  
**WEIGHT** 6.9 oz (195.6 g)  
**GRIT** 325 (Coarse)  
 750 (Medium)  
 1200 (Fine)

**BOX:** MODEL # 97082-B, CATALOG # 6253  
**CLAM:** MODEL # 97082-C, CATALOG # 6254

## EDGE TEK® STEEL 10"



**MATERIAL** 100% Diamond coated oval surfaces  
**SIZE** 10" x 1/2" (25.4 cm x 1.3 cm)  
**OVERALL** 15 1/4" (38.7 cm)  
**WEIGHT** 3.3 oz (93.6 g)  
**GRIT** 750 (Medium) both sides

**BOX:** MODEL # 97081-B, CATALOG # 6251  
**CLAM:** MODEL # 97081-C, CATALOG # 6252

## EDGE TEK® DUAL FLAT POCKET STONE



**MATERIAL** 100% Diamond coated surface  
**SIZE** 4" x 1 1/4" (10.2 cm x 3.2 cm)  
**WEIGHT** 1.3 oz (36.9 g)  
**GRIT** 325 (Coarse)  
 750 (Medium)  
**SHEATH** Vinyl, black

**BOX:** MODEL # 97076-B, CATALOG # 6241  
**CLAM:** MODEL # 97076-C, CATALOG # 6242

## EDGE TEK® BENCH STONE (MEDIUM AND COARSE)



**MATERIAL** 100% Diamond coated surface  
**SIZE** 6" x 2" (15.2 cm x 5.1 cm)  
**OVERALL** 7 5/8" (19.3 cm) x 2 5/8" (11.7 cm)  
**WEIGHT** 4.6 oz (130.4 g)  
**GRIT** **Red:** Grit 750 (Medium) single side  
**Yellow:** Grit 325 (Coarse) single side

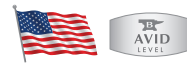
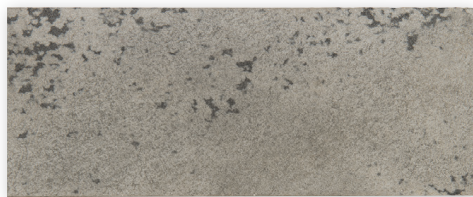
### RED

**BOX:** MODEL # 97078-B, CATALOG # 6245  
**CLAM:** MODEL # 97078-C, CATALOG # 6246

### YELLOW

**BOX:** MODEL # 97077-B, CATALOG # 6243  
**CLAM:** MODEL # 97077-C, CATALOG # 6244

## SOFT ARKANSAS STONE



**MATERIAL** 100% natural Quartz crystals-  
 Novaculite  
**OVERALL** 1 5/8" x 4 3/8" (4.2 cm x 11.1 cm)  
**GRIT** 500-600 (Coarse)  
**SHEATH** Nylon, black

**BOX:** MODEL # 97017-B, CATALOG # 10094

## DIAMOND POCKET SHARPENER



**MATERIAL** Diamond sharpener in a retractable, pen style barrel. Tapered end for serrated blades. Fish hook groove. Flat side for straight blades. Pocket clip. Portable, versatile and durable for field use.

**CLOSED** 5 1/8" (13.1 cm)  
**GRIT** 400 (Medium)

**BOX:** MODEL # 97070-B, CATALOG # 5867  
**CLAM:** MODEL # 97070-C, CATALOG # 5858

# BUCK GEAR

Get quality Buck branded merchandise! We have an array of items to please your loyal Buck customers. Our comfortable shirts and hats feature popular styles, fits and various designs.

## MEN'S



### 1. RED WHITE AND BUCK

60% Cotton/40% Polyester

MODEL # 13099-MED, CATALOG # 11737  
 MODEL # 13099-LRG, CATALOG # 11738  
 MODEL # 13099-XLG, CATALOG # 11739  
 MODEL # 13099-2XL, CATALOG # 11740  
 MODEL # 13099-3XL, CATALOG # 11741

### 2. STARS AND BARS ANVIL

60% Cotton/40% Polyester

MODEL # 13109-MED, CATALOG # 11742  
 MODEL # 13109-LRG, CATALOG # 11743  
 MODEL # 13109-XLG, CATALOG # 11744  
 MODEL # 13109-2XL, CATALOG # 11745  
 MODEL # 13109-3XL, CATALOG # 11746

### 3. FORGED FOR THE HUNT

60% Cotton/40% Polyester

MODEL # 13084-MED, CATALOG # 11634  
 MODEL # 13084-LRG, CATALOG # 11635  
 MODEL # 13084-XLG, CATALOG # 11636  
 MODEL # 13084-2XL, CATALOG # 11637  
 MODEL # 13084-3XL, CATALOG # 11649

### 4. WHITETAIL BUCK

60% Cotton/40% Polyester

MODEL # 13092-MED, CATALOG # 11732  
 MODEL # 13092-LRG, CATALOG # 11733  
 MODEL # 13092-XLG, CATALOG # 11734  
 MODEL # 13092-2XL, CATALOG # 11735  
 MODEL # 13092-3XL, CATALOG # 11736

### 5. VINTAGE STAR

60% Cotton/40% Polyester

MODEL # 13087-MED, CATALOG # 11712  
 MODEL # 13087-LRG, CATALOG # 11713  
 MODEL # 13087-XLG, CATALOG # 11714  
 MODEL # 13087-2XL, CATALOG # 11715  
 MODEL # 13087-3XL, CATALOG # 11716

### 6. BUCK LOGO

60% Cotton/40% Polyester

MODEL # 13088-MED, CATALOG # 11717  
 MODEL # 13088-LRG, CATALOG # 11718  
 MODEL # 13088-XLG, CATALOG # 11719  
 MODEL # 13088-2XL, CATALOG # 11720  
 MODEL # 13088-3XL, CATALOG # 11721

### 7. EST 1902

60% Cotton/40% Polyester

MODEL # 13090-MED, CATALOG # 11722  
 MODEL # 13090-LRG, CATALOG # 11723  
 MODEL # 13090-XLG, CATALOG # 11724  
 MODEL # 13090-2XL, CATALOG # 11725  
 MODEL # 13090-3XL, CATALOG # 11726

### 8. LONG SLEEVE, LOGO

60% Cotton/40% Polyester

MODEL # 13091-MED, CATALOG # 11727  
 MODEL # 13091-LRG, CATALOG # 11728  
 MODEL # 13091-XLG, CATALOG # 11729  
 MODEL # 13091-2XL, CATALOG # 11730  
 MODEL # 13091-3XL, CATALOG # 11731

# WOMEN'S



**STARS AND BARS ANVIL**  
100% Cotton

MODEL # 13101-SML, CATALOG # 11752  
MODEL # 13101-MED, CATALOG # 11753  
MODEL # 13101-LRG, CATALOG # 11754  
MODEL # 13101-XLG, CATALOG # 11755



**BUCK SCRIPT**  
60% Cotton/40% Polyester

MODEL # 13110-SML, CATALOG # 11756  
MODEL # 13110-MED, CATALOG # 11757  
MODEL # 13110-LRG, CATALOG # 11758  
MODEL # 13110-XLG, CATALOG # 11759



**HUNT, CAMP, LIVE**  
100% Cotton

MODEL # 13080-SML, CATALOG # 11599  
MODEL # 13080-MED, CATALOG # 11600  
MODEL # 13080-LRG, CATALOG # 11601  
MODEL # 13080-XLG, CATALOG # 11602

# HATS



1

2

3

4

5

6

7

8



**1. BUCK, YELLOW ANVIL**  
One size fits most

MODEL # 89122, CATALOG # 11605

**2. STARS AND BARS ANVIL**  
One size fits most

MODEL # 89120, CATALOG # 11603

**3. NAVY LOGO PATCH**  
One size fits most

MODEL # 89123, CATALOG # 11606

**4. FORGED FOR THE HUNT**  
One size fits most

MODEL # 89121, CATALOG # 11604

**5. LADIES PINK & GRAY MESH**  
One size fits most

MODEL # 89088, CATALOG # 7772

**6. ANVIL FLAG**  
One size fits most

MODEL # 89124, CATALOG # 11607

**7. MOSSY OAK® BLAZE™ ORANGE CAMO**  
One size fits most

MODEL # 89054, CATALOG # 6916

**8. REALTREE® XTRA™ CAMO**  
One size fits most

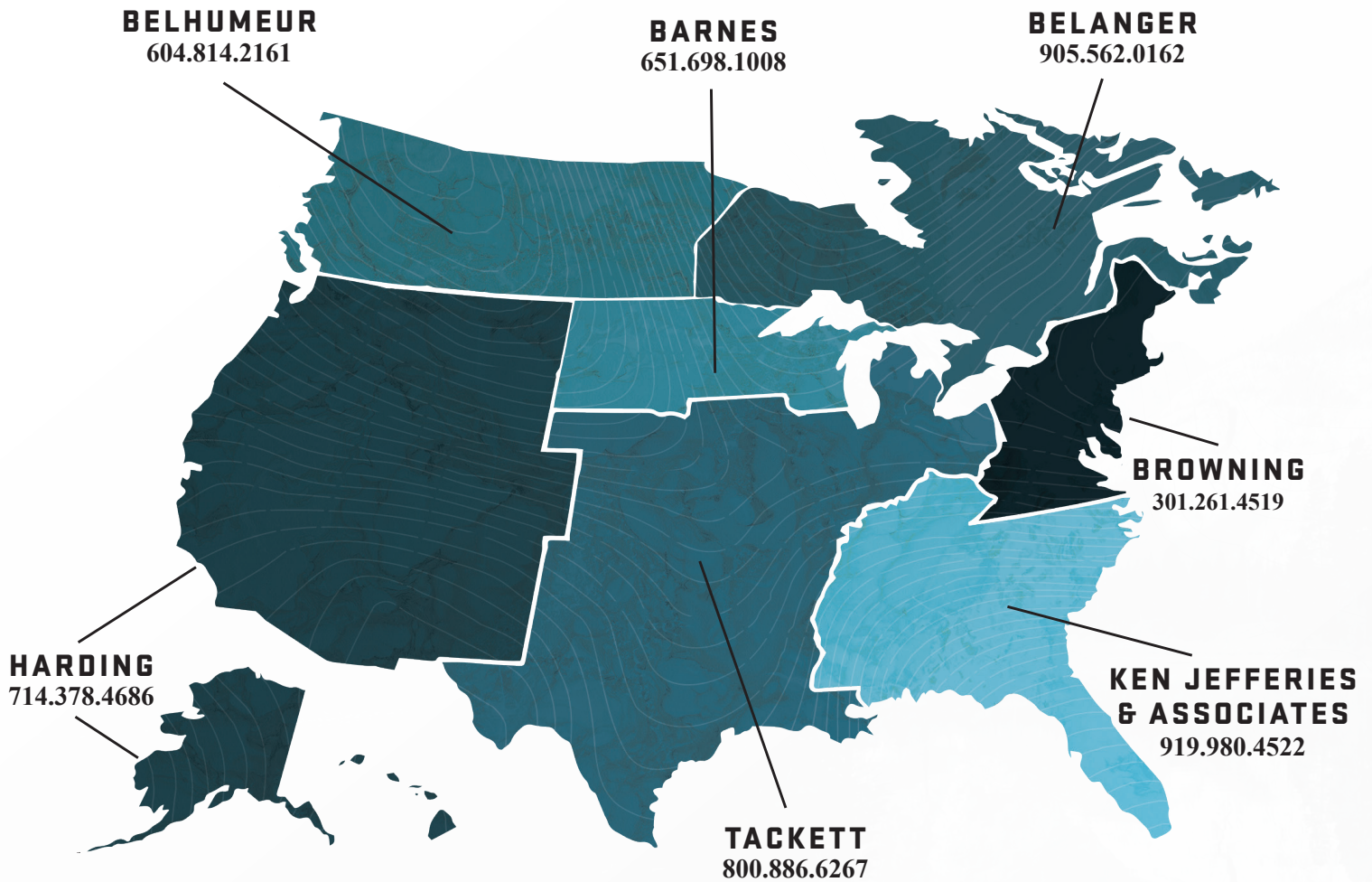
MODEL # 89068, CATALOG # 6372





# SALES REP TERRITORIES

To help you take full advantage of all the new opportunities Buck Knives offers you for 2018, we have a team of experienced sales reps ready to work with you to develop retail solutions tailored to fit your needs. Collectively, they bring you more than 100 years of experience. To find your contact, here's a map showing our head sales reps and their territories. As always, if you have any questions about products or other topics, please contact your local sales representative or call our dealer hotline at (800) 735-2825. Please direct consumer inquiries to (800) 326-2825 or (208) 262-0500.



## MILITARY/GOVERNMENT

J&A MARKETING

VIRGINIA BEACH 757.427.7563

DALLAS 214.339.6770

NORTH KINGSTOWN 888.254.5900

INTERNATIONAL 208.262.0500

## BUCK KNIVES

Web: [www.buckknives.com](http://www.buckknives.com)

Phone: 800.735.2825

Fax: 800.733.2825

International Fax: 208.262.0492

660 S. Lochsa Street Post Falls, ID 83854

# ALLIANCES & INDUSTRY PARTNERS

Buck Knives proudly supports these organizations and the people who share our dedication to both the preservation and enjoyment of our rights and America's wildlife resources, not only for ourselves but for all the generations to follow.



**NRA**



©2018 Buck Knives, Inc. No part of this catalog may be used or reproduced in any form, for any purpose without the express written consent of Buck Knives, Inc. Certain utility and design patents issued to Buck Knives are noted, however, Buck Knives holds additional patents pending, design and utility patents both domestic and foreign on products in this catalog. All trademarks indicated are owned and/or registered by Buck Knives, Inc. except as follows: Alcryn is a registered trademark of Du Pont de Nemours & Co.; Painted Pony is a registered trademark of Michael Prater & Co.; Dymalux is a registered trademark of Cousineau Wood Products of Maine LLC; Santoprene is a registered trademark of Exxon Mobil Corp.; Dynaflex is a registered trademark of Polyone Corp.; Paperstone is a registered trademark of Paneltech International LLC; Micarta® is a registered trademark of Industrial Laminates/ Norplex, Inc.; TOPS is a registered trademark of G.M.I Manufacturing, Inc.; Zirblast is a registered trademark of Societe Europeennee Des Produits Refractaires Corp.; Realtree/Realtree Xtra and Xtra Green are registered trademarks of Jordan Outdoor Enterprises, Ltd.; Mossy Oak, Mossy Oak Break-Up COUNTRY and Mossy Oak Blaze are registered trademarks of Haas Outdoors, Inc.; Damasteel is a trademark of Damasteel AB; Kryptek, Typhon, Neptune, Pontus and Highlander are registered trademarks of Kryptek Outdoor Group, Inc.; Muddy Girl is a registered trademark of Moon Shine LP; FlipStik and JewelStik are registered trademarks of Hewlett Manufacturing; TEK-LOK is a registered trademark of Teklon Corporation; Cerakote is a registered trademark of NIC Industries, Inc.; C-TEK is a registered trademark of Curbell Plastics, Inc.; Mr. Crappie is a registered trademark of Marshall, Wally.

Knife laws and regulations can vary significantly from location to location. As such, certain styles, sizes and blades may not be permitted in certain locations and areas. Buck Knives produces many different types of knives for a wide variety of legitimate everyday use. However, due to the complex and ever changing nature of knife laws and regulations, it is not possible for Buck Knives to be aware of specific prohibitions in areas where its knives may be purchased, carried or used. It is the responsibility of the buyer/user to investigate, understand and comply with any and all laws and regulations that may apply to his or her area. The buyer/user is solely responsible for any claims arising from violations of these laws or regulations or any unintended use or misuse of the product.

The sale of automatic knives is federally regulated. Always check permissibility within your state or locality as non-federal personnel may be precluded from ownership or use by state laws. NO EXCEPTIONS WILL BE MADE. Purchase of automatic knives must be preceded by the submission of an Automatic Knife Acknowledgement Form. Shipping of Automatic Knives: Automatic knives shipped by Buck Knives, Inc will be sent via common courier and CANNOT be shipped by the U.S. Postal Service. All returns of automatic knives must be shipped via common courier as well, and not by the U.S. Postal Service. Our policy requires that all automatic knives require a signed Automatic Knife Acknowledgement Form.





**BUCK KNIVES, INC.**

**660 S. LOCHSA STREET  
POST FALLS, ID 83854**

**WEB  
WWW.BUCKKNIVES.COM**

**PHONE  
800.735.2825  
208.262.0500**

**MODEL 12054  
CATALOG 11766  
PRINTED IN THE USA**

